

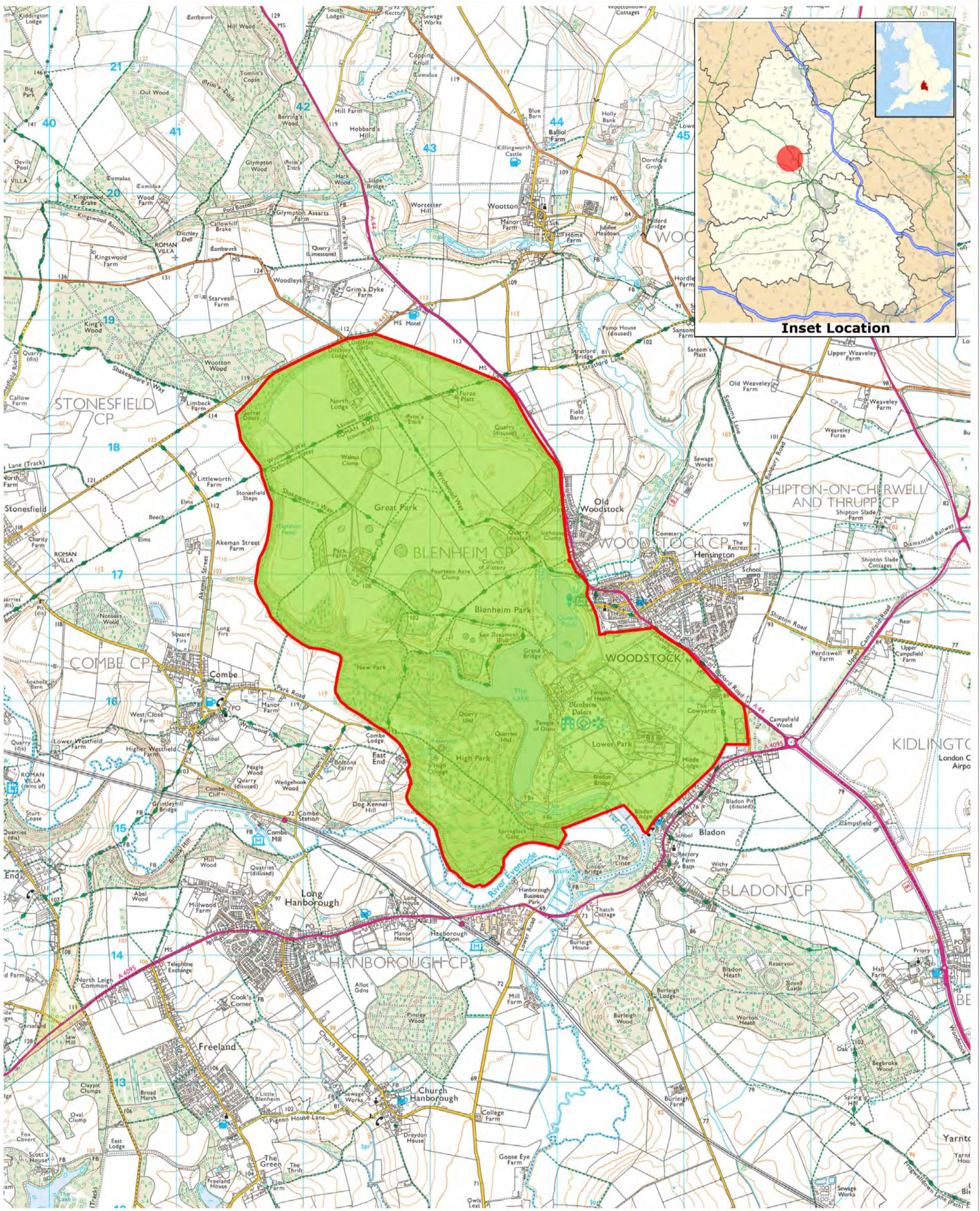
# BLENHEIM PALACE WORLD HERITAGE SITE REVISED MANAGEMENT PLAN 2017

APPENDIX I : MAPS

# APPENDIX I

## MAPS

- 1 Location
- 2 Boundary of WHS and IHT 'Heritage' Area
- 3 National Statutory Designations
- 4 Public Access and Visitor Facilities
- 5 Character of the Setting
- 6 WHS Character Areas
- 7 Land use
- 8 Location of Key Historic Features
- 9 National Nature Conservation Designations and Priority Habitats
- 10 Significant Archaeological Earthworks



**Inset Location**



World Heritage Site Boundary & Area

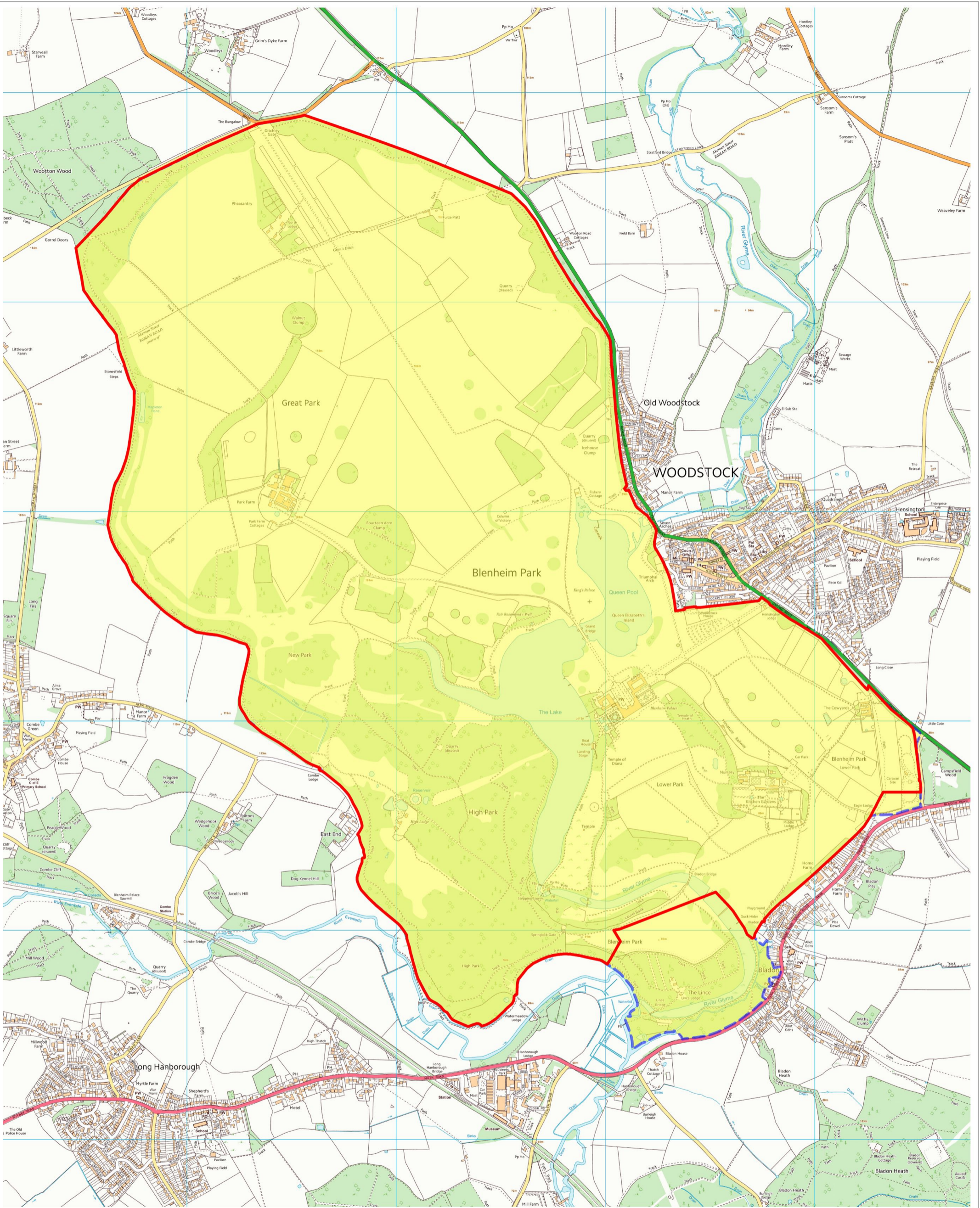
© Crown copyright and database rights  
Ordnance Survey 0100031673



**FIGURE 1 : LOCATION**

Not To Scale March 2017

**Blenheim Palace World Heritage Site Plan**



**Key**

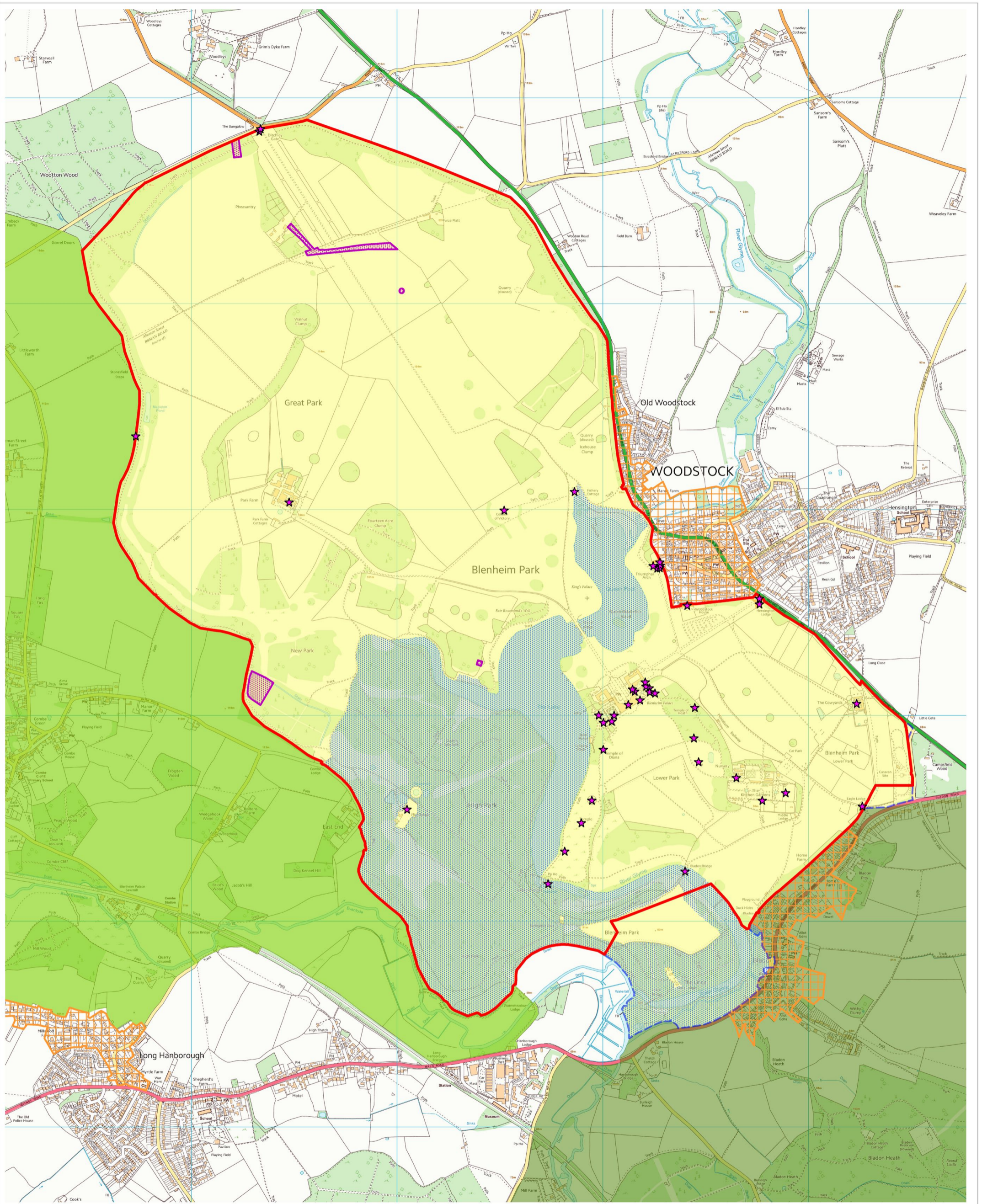
-  World Heritage Site Boundary
-  Designated Heritage Area (IHT Area)

© Crown copyright and database rights  
 Ordnance Survey 0100031673

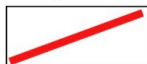









**FIGURE 2 : BOUNDARY OF WHS AND IHT AREA**

Not To Scale March 2017



**Key**

- |  |   |   |  |
|--|---|---|--|
|  | World Heritage Site Boundary                |  | Listed Buildings within the WHS Boundary |
|  | Historic England Registered Park and Garden |  | Conservation Area                        |
|  | Scheduled Monuments                         |  | Cotswolds AONB                           |
|  | Site of Special Scientific Interest         |  | Oxford Green Belt                        |

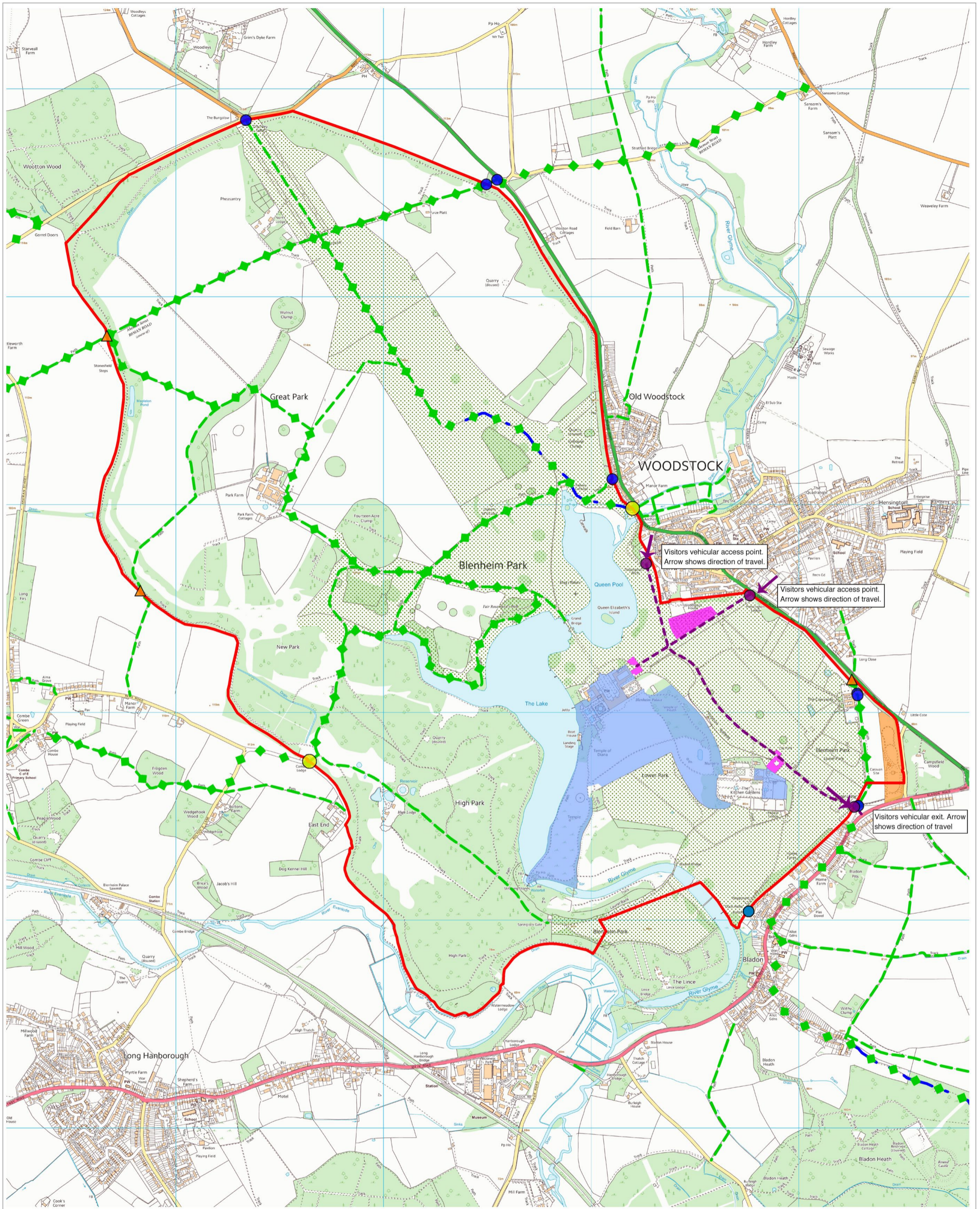
© Crown copyright and database rights  
Ordnance Survey 0100031673



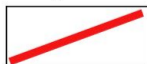

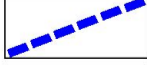


**FIGURE 3 : NATIONAL STATUTORY DESIGNATIONS**

Not To Scale March 2017

**Blenheim Palace World Heritage Site Plan**



**Key**

-  World Heritage Site Boundary
-  Public Footpath
-  Public Bridleway
-  Palace, Gardens & Pleasure Grounds Access
-  Public Footpath Gate

-  Park Access
-  Visitor Car Parking
-  Visitor Access & Exit Routes. Vehicular Access.
-  Recreation/Holiday
-  Public Footpath Stile

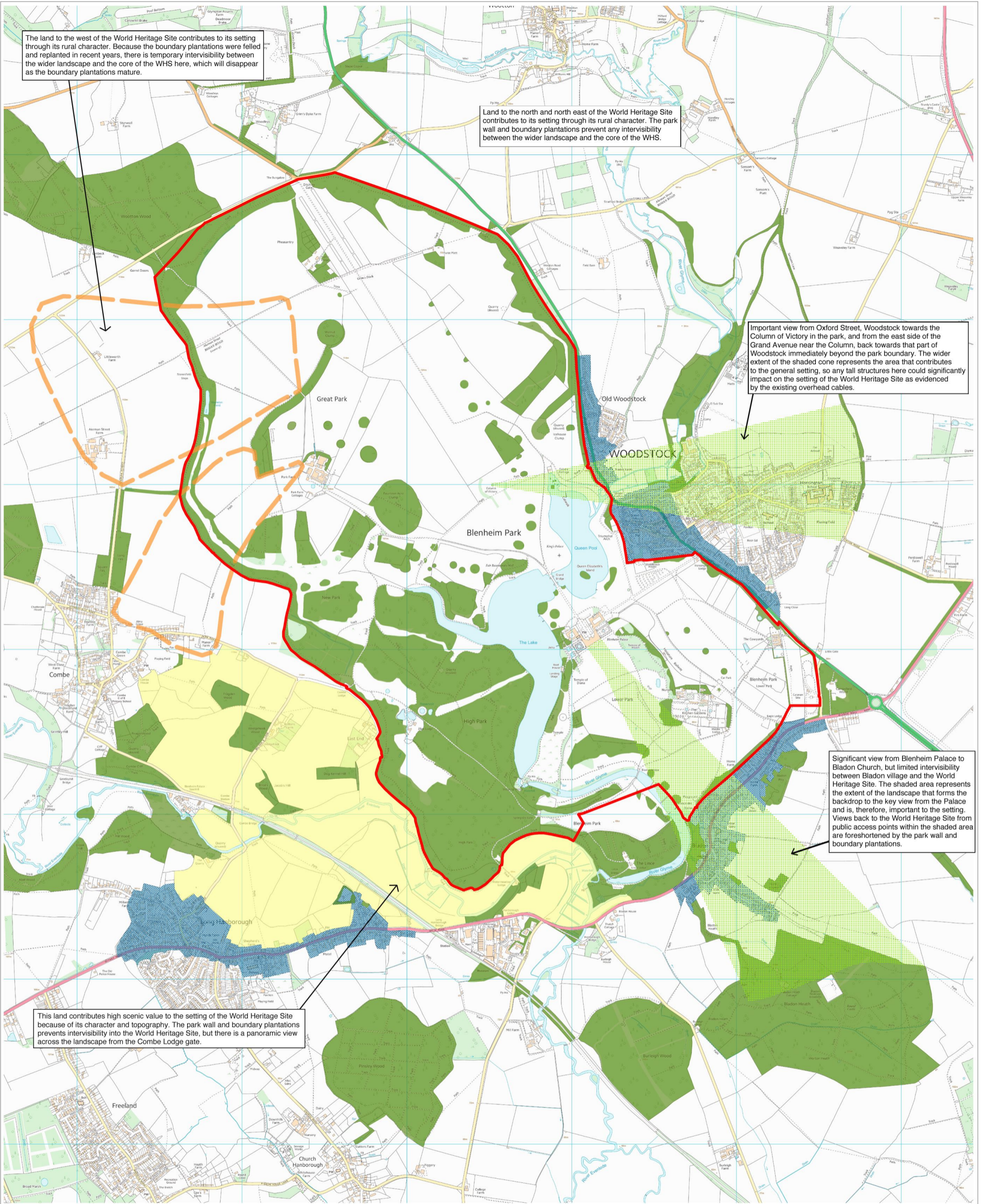
-  Promoted Routes
-  Access for All Access Point
-  Other Access Gate in Public Use

© Crown copyright and database rights  
Ordnance Survey 0100031673



**FIGURE 4 : PUBLIC ACCESS AND VISITOR FACILITIES**

Not To Scale March 2017



The land to the west of the World Heritage Site contributes to its setting through its rural character. Because the boundary plantations were felled and replanted in recent years, there is temporary intervisibility between the wider landscape and the core of the WHS here, which will disappear as the boundary plantations mature.

Land to the north and north east of the World Heritage Site contributes to its setting through its rural character. The park wall and boundary plantations prevent any intervisibility between the wider landscape and the core of the WHS.

Important view from Oxford Street, Woodstock towards the Column of Victory in the park, and from the east side of the Grand Avenue near the Column, back towards that part of Woodstock immediately beyond the park boundary. The wider extent of the shaded cone represents the area that contributes to the general setting, so any tall structures here could significantly impact on the setting of the World Heritage Site as evidenced by the existing overhead cables.

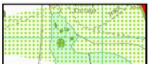
Significant view from Blenheim Palace to Bladon Church, but limited intervisibility between Bladon village and the World Heritage Site. The shaded area represents the extent of the landscape that forms the backdrop to the key view from the Palace and is, therefore, important to the setting. Views back to the World Heritage Site from public access points within the shaded area are foreshortened by the park wall and boundary plantations.

This land contributes high scenic value to the setting of the World Heritage Site because of its character and topography. The park wall and boundary plantations prevents intervisibility into the World Heritage Site, but there is a panoramic view across the landscape from the Combe Lodge gate.

**Key**



World Heritage Site Boundary



Areas containing some intervisibility with the World Heritage Site.



Residential areas vulnerable to tall or prominent development.



Areas containing temporary intervisibility with the World Heritage Site.



Areas of high scenic value which contribute to the World Heritage Site, but with no intervisibility beyond the park wall and boundary plantations.



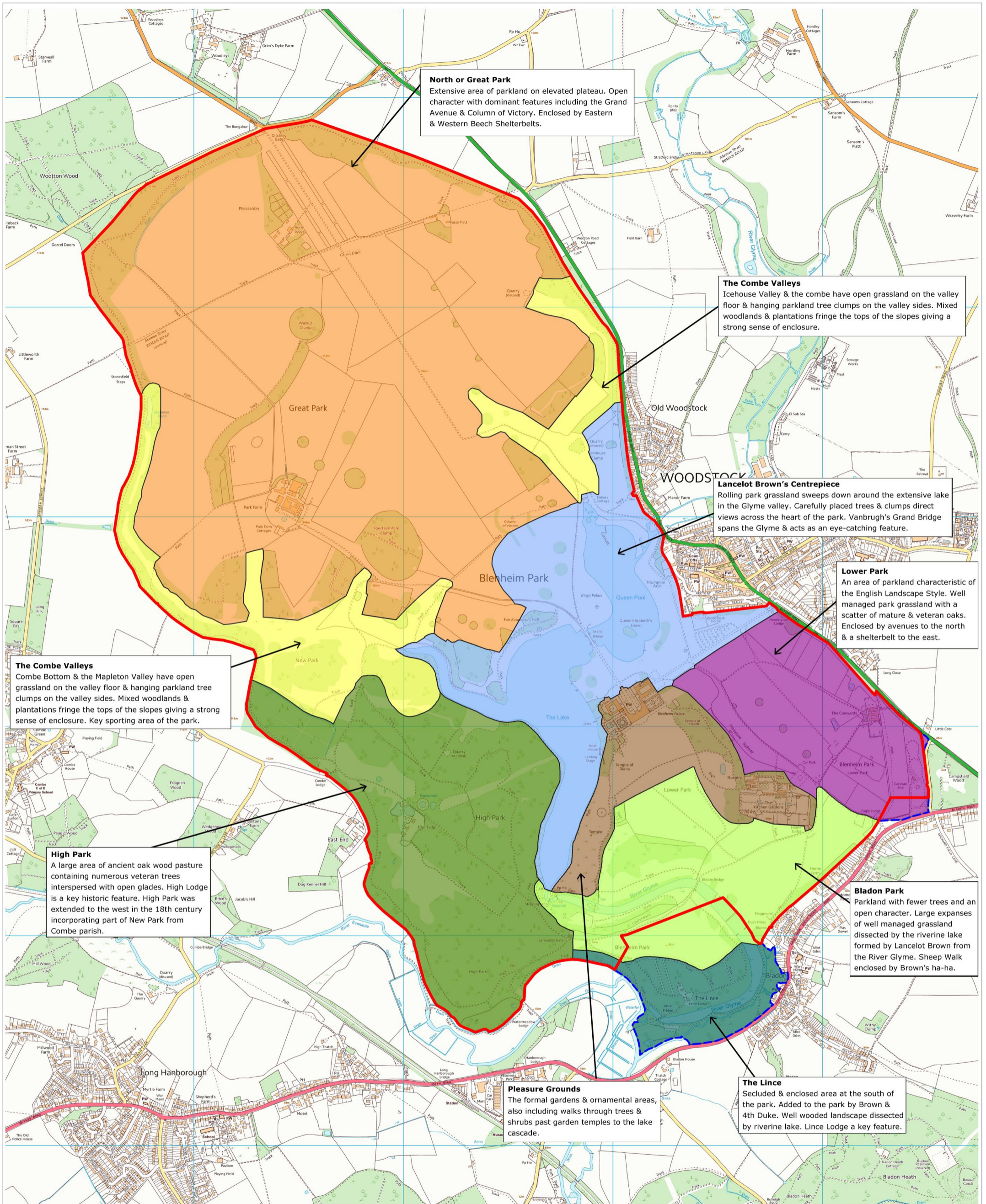
Woodlands and plantations contributing to the setting of the World Heritage Site.



© Crown copyright and database rights  
Ordnance Survey 0100031673

**FIGURE 5 : CHARACTER OF THE SETTING**

Not To Scale March 2017



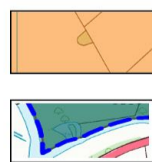
**Key**



World Heritage Site Boundary  
The Combe Valleys  
Lancelot Brown's Centrepiece  
Lower Park



Bladon Park  
The Lince  
Pleasure Grounds  
High Park



The Great Park  
Historic England RPG Boundary

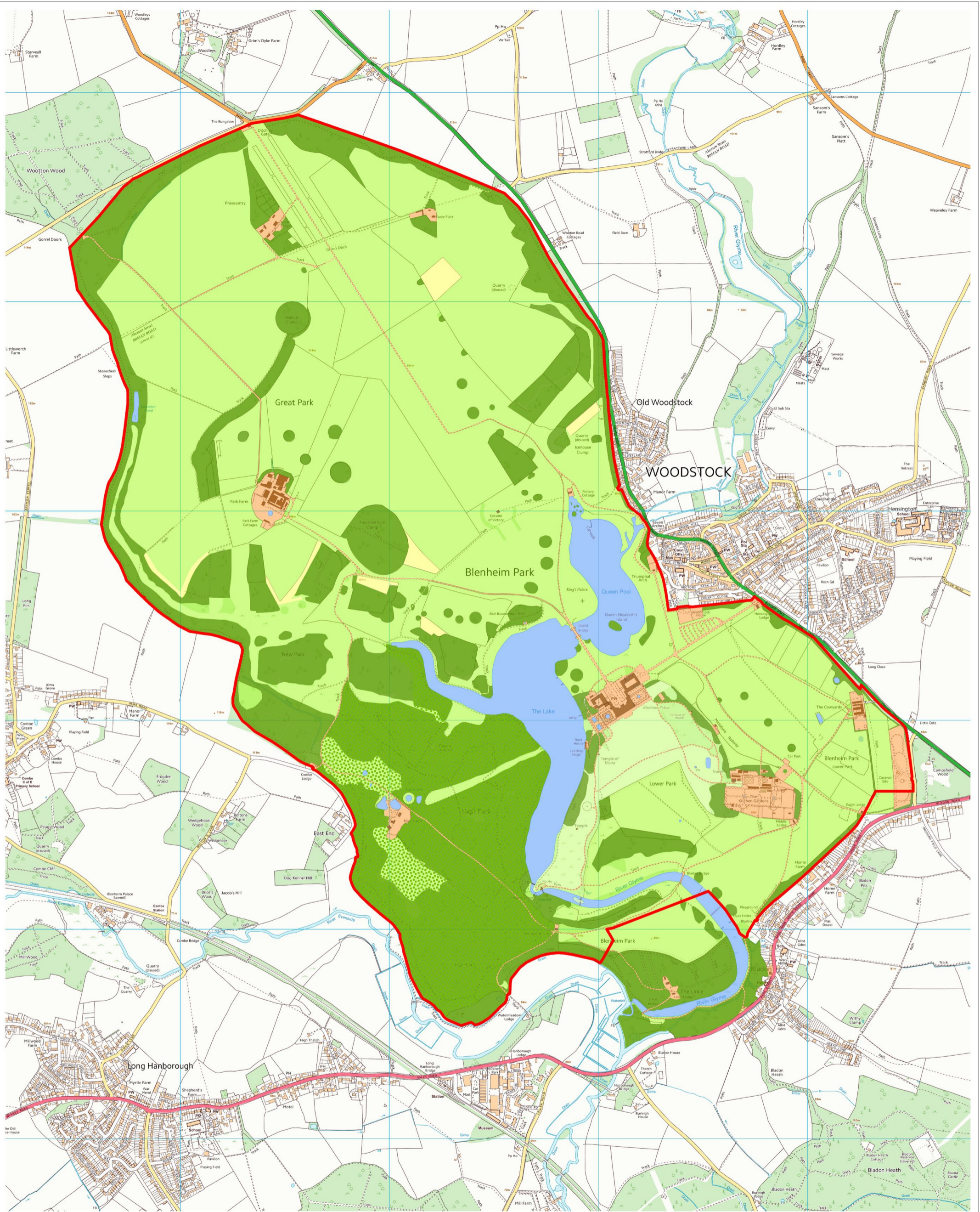
© Crown copyright and database rights  
Ordnance Survey 0100031673



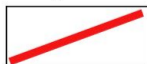





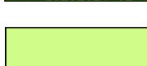
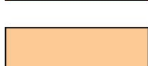
**FIGURE 6 : CHARACTER AREAS**

Not To Scale March 2017





**Key**

- |  |                              |   |                              |
|--|------------------------------|---|------------------------------|
|  | World Heritage Site Boundary |  | Gardens and Pleasure Grounds |
|  | Main Woodlands and Clumps    |  | Water                        |
|  | Wood Pasture - High Park     |  | Buildings                    |
|  | Park Grassland               |  | Other Lands                  |

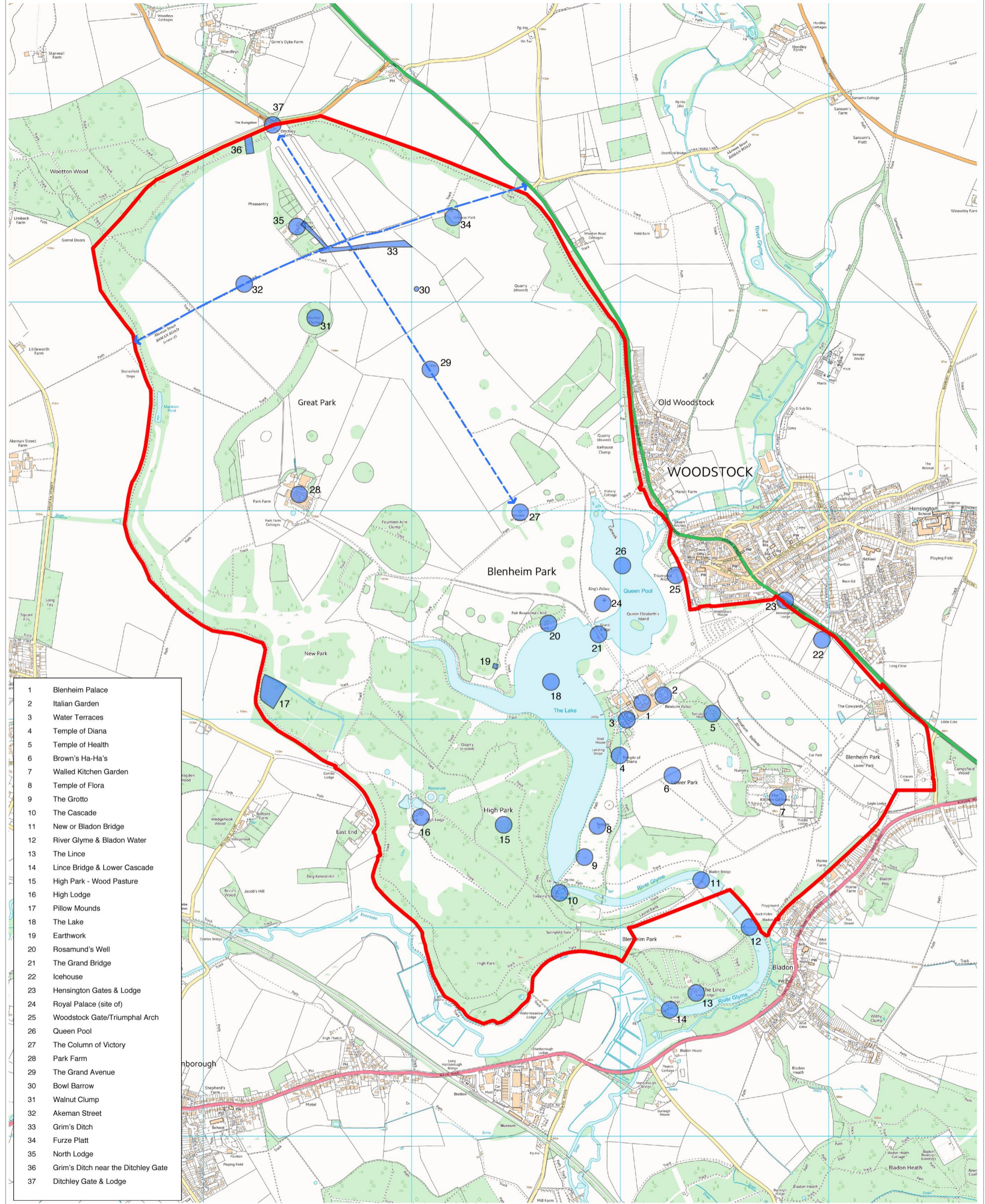
© Crown copyright and database rights  
Ordnance Survey 0100031673



**FIGURE 7 : LAND USE**

Not To Scale March 2017

**Blenheim Palace World Heritage Site Plan**



- 1 Blenheim Palace
- 2 Italian Garden
- 3 Water Terraces
- 4 Temple of Diana
- 5 Temple of Health
- 6 Brown's Ha-Ha's
- 7 Walled Kitchen Garden
- 8 Temple of Flora
- 9 The Grotto
- 10 The Cascade
- 11 New or Bladon Bridge
- 12 River Glyme & Bladon Water
- 13 The Lince
- 14 Lince Bridge & Lower Cascade
- 15 High Park - Wood Pasture
- 16 High Lodge
- 17 Pillow Mounds
- 18 The Lake
- 19 Earthwork
- 20 Rosamund's Well
- 21 The Grand Bridge
- 22 Icehouse
- 23 Hensington Gates & Lodge
- 24 Royal Palace (site of)
- 25 Woodstock Gate/Triumphal Arch
- 26 Queen Pool
- 27 The Column of Victory
- 28 Park Farm
- 29 The Grand Avenue
- 30 Bowl Barrow
- 31 Walnut Clump
- 32 Akeman Street
- 33 Grim's Ditch
- 34 Furze Platt
- 35 North Lodge
- 36 Grim's Ditch near the Ditchley Gate
- 37 Ditchley Gate & Lodge

**Key**

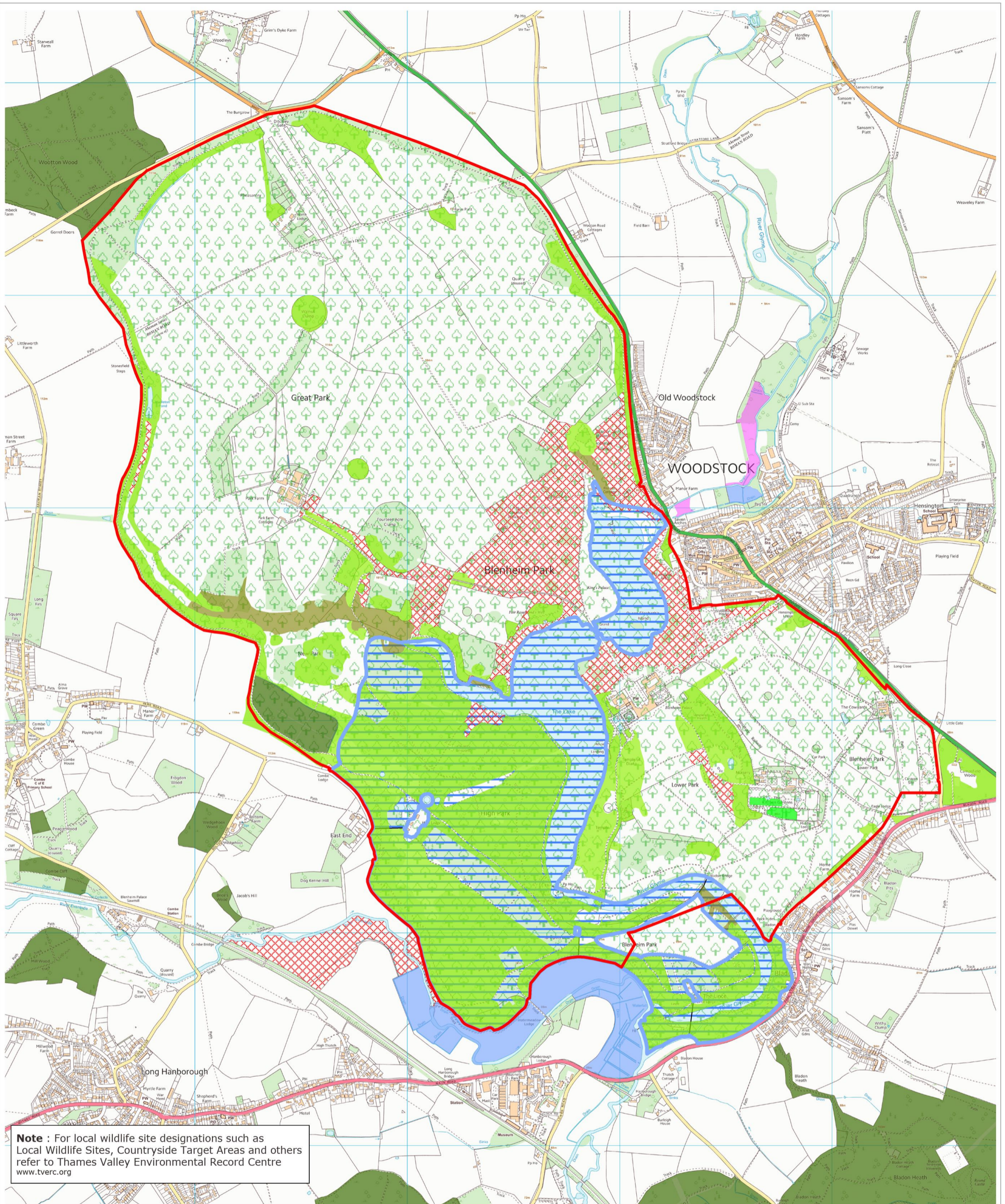
- World Heritage Site Boundary
- Location of Key Features

© Crown copyright and database rights  
Ordnance Survey 0100031673













**FIGURE 8 : LOCATION OF KEY HISTORIC FEATURES**

Not To Scale March 2017



**Note :** For local wildlife site designations such as Local Wildlife Sites, Countryside Target Areas and others refer to Thames Valley Environmental Record Centre [www.tvrec.org](http://www.tvrec.org)

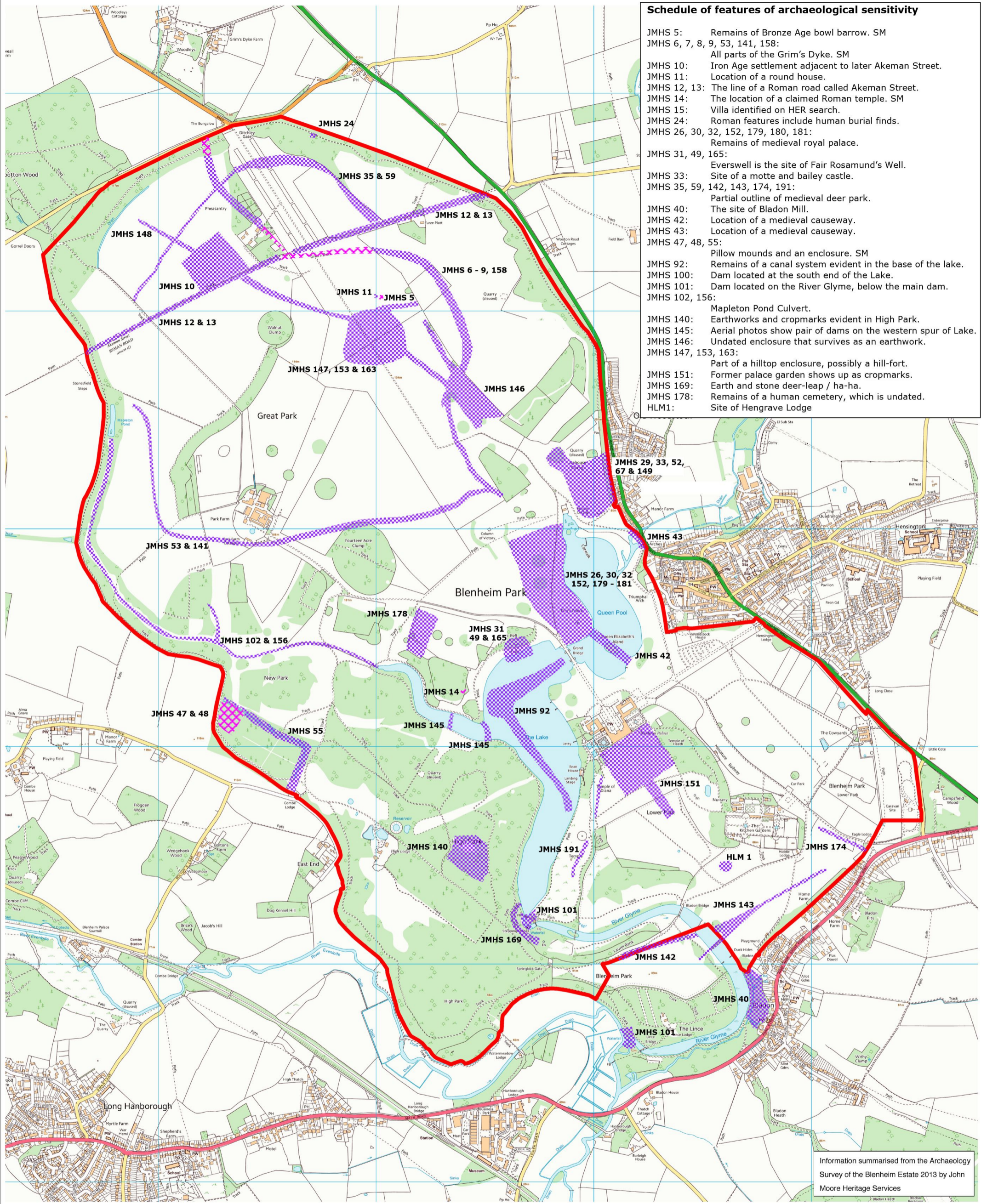
	World Heritage Site Boundary		Deciduous Woodland		Priority Habitat - No Main Habitat
	SSSI		Traditional Orchard		
	Ancient Woodland		Flood Plain Grazing Marsh		
<b>Biodiversity 2020 Priority Habitats</b>			Lowland Fen		
	Wood Pasture & Parkland		Lowland Calcareous Grassland		

© Crown copyright and database rights  
Ordnance Survey 0100031673



**FIGURE 9 : NATIONAL NATURE CONSERVATION DESIGNATIONS & PRIORITY HABITATS**

Not To Scale March 2017



- Schedule of features of archaeological sensitivity**
- JMHS 5: Remains of Bronze Age bowl barrow. SM
  - JMHS 6, 7, 8, 9, 53, 141, 158: All parts of the Grim's Dyke. SM
  - JMHS 10: Iron Age settlement adjacent to later Akeman Street.
  - JMHS 11: Location of a round house.
  - JMHS 12, 13: The line of a Roman road called Akeman Street.
  - JMHS 14: The location of a claimed Roman temple. SM
  - JMHS 15: Villa identified on HER search.
  - JMHS 24: Roman features include human burial finds.
  - JMHS 26, 30, 32, 152, 179, 180, 181: Remains of medieval royal palace.
  - JMHS 31, 49, 165: Everswell is the site of Fair Rosamund's Well.
  - JMHS 33: Site of a motte and bailey castle.
  - JMHS 35, 59, 142, 143, 174, 191: Partial outline of medieval deer park.
  - JMHS 40: The site of Bladon Mill.
  - JMHS 42: Location of a medieval causeway.
  - JMHS 43: Location of a medieval causeway.
  - JMHS 47, 48, 55: Pillow mounds and an enclosure. SM
  - JMHS 92: Remains of a canal system evident in the base of the lake.
  - JMHS 100: Dam located at the south end of the Lake.
  - JMHS 101: Dam located on the River Glyme, below the main dam.
  - JMHS 102, 156: Mapleton Pond Culvert.
  - JMHS 140: Earthworks and cropmarks evident in High Park.
  - JMHS 145: Aerial photos show pair of dams on the western spur of Lake.
  - JMHS 146: Undated enclosure that survives as an earthwork.
  - JMHS 147, 153, 163: Part of a hilltop enclosure, possibly a hill-fort.
  - JMHS 151: Former palace garden shows up as cropmarks.
  - JMHS 169: Earth and stone deer-leap / ha-ha.
  - JMHS 178: Remains of a human cemetery, which is undated.
  - HLM1: Site of Hengrave Lodge

**Key**

- World Heritage Site Boundary
- Scheduled Monuments
- Archaeologically Sensitive Areas - Earthworks

© Crown copyright and database rights  
Ordnance Survey 0100031673



**FIGURE 10 : SIGNIFICANT ARCHAEOLOGICAL EARTHWORKS**

Not To Scale March 2017